

A PROFILE

FOUNTAINHEAD

URBAN DESIGN * ARCHITECTURE * INTERIOR * LANDSCAPE

C-9/9148, Vasant Kunj, New Delhi - 110070. Ph: 26124540, 26124543; 26891534 Fax: 91-11-26898459 email: office@studiofountainhead.com

FOUNTAINHEAD

COMPANY PROFILE

ISO 9001:2015

C-9/9148, Vasant Kunj, New Delhi – 110070
Tel.: 91-11-26899221, 26891534, 26124540, 26124543
Fax: 91-11-26898459
Email: office@studiofountainhead.com

BIO-DATA OF PRINCIPALS:

SUSHREE MATHUR

B. Arch, M.C.A, Fellow IIA
(C.E.P.T, AHMEDABAD)

Practicing Architecture since 1991 and prior to that has a past experience of handling large projects as part of other organisations.

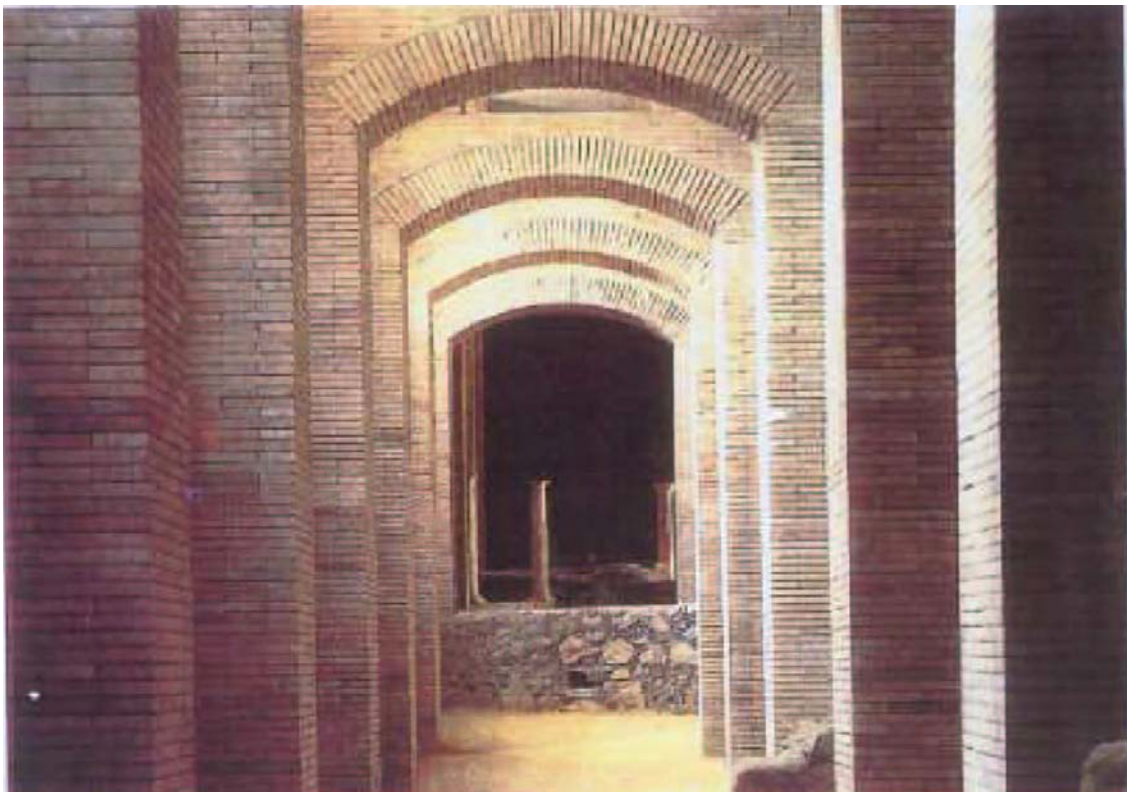
With Robert Obrist & Associates in St. Moritz, Switzerland, on design & detailing of schools & army campus (1984-85) after an exchange programme of one semester at ETH University. Zurich, as part of Studies in 1984.

With M/s Ben Rabin & Associates in London, on restoration of buildings (1985).

With Ravinder Bhan (1986) on design & development of Ayodhya Ghats restoration.

With Sumit Ghosh & Associates (1987-89) on N.G.R.I. Computer Center, Hyderabad and Interior for N.I.F.T. at I.P. Stadium, New Delhi. Worked independently on all aspects of both projects from concept design to, Design development, working drawings & Details and Tendering, - up to completion.

As associate on the Design and execution of JIL, Plastics factory at NOIDA – 1989-90.



Started Fountainhead in 1991-92 as a architectural design house.

BIO-DATA OF PRINCIPALS:

RAJAT KUMAR MATHUR

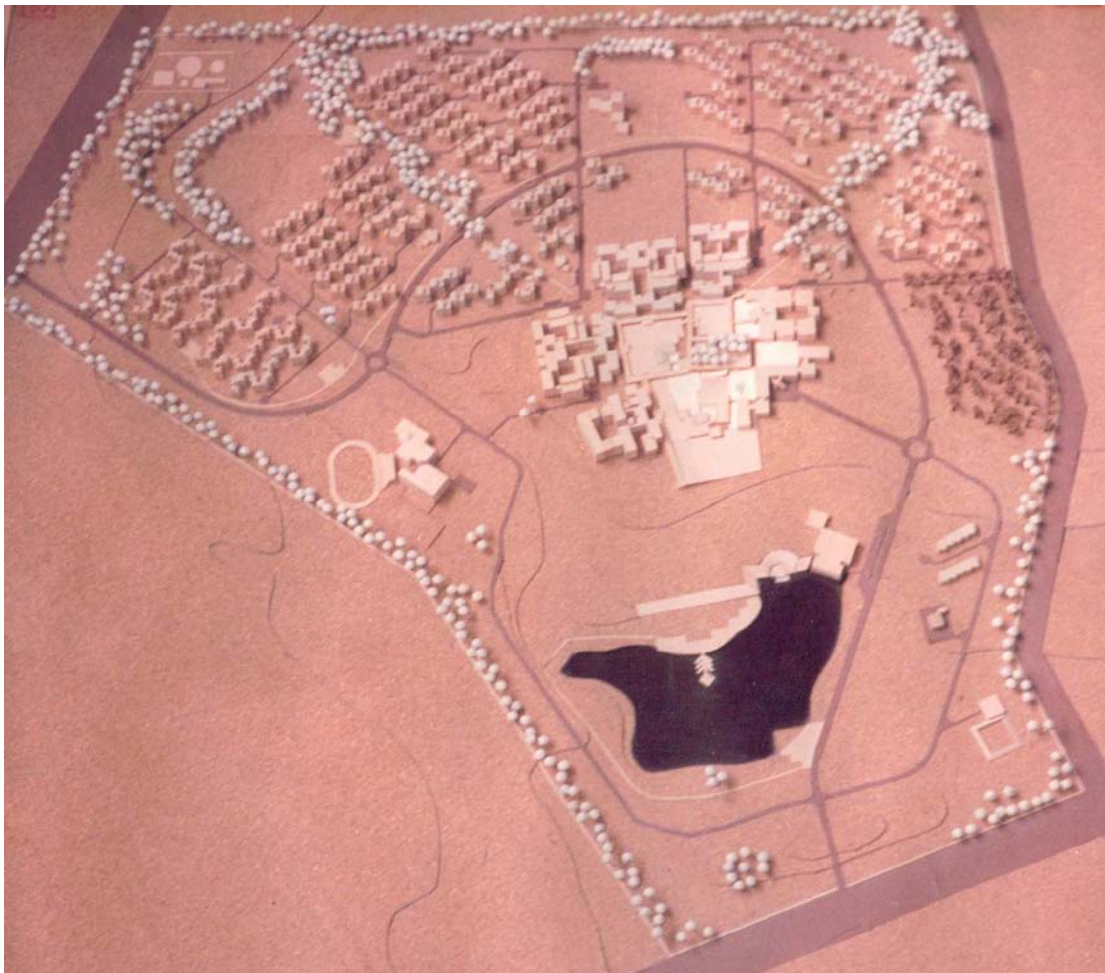
B. Arch, M.C.A, Fellow IIA
(C.E.P.T, AHMEDABAD)

Practising Architecture since 1982. With a wide experience in the Design and execution of projects of varied sizes and specialties, has been associated with the following projects in the past.

AWARDS

Awarded 1ST PRIZE in the National Design Competition for the design of Dr B.R Ambedkar University at Lucknow. A University for Doctoral and Post-doctoral studies in science and technology.

Awarded 2ND PRIZE in the national Design Competition for the design of Civic Centre for the M.C.D. Delhi.



WINNING DESIGN FOR DR B.R AMBEDKAR UNIVERSITY AT LUCKNOW

FARMHOUSES, RESIDENCES AND HOUSING:

Naturovill, Housing and naturopathy center at Dehradun - 1000 lacs
Pavitra Co-operative Group Housing at Patparganj, Delhi - 750 lacs
Skyline Cottages, housing at Aligarh - 210 lacs
Town Housing at DLF Qutab Enclave - 5000 lacs
Nikjan Cottages, Housing at Aligarh - 300 lacs
Staff Housing for Bharat Foods Ltd. Reva, M.P. - 140 lacs
Manzer, Housing at Aligarh - 70 lacs
Luxury Housing at Mehrauli, Delhi - 1200 lacs
Farm house for Mr. R.Gupta at Rajokri, Delhi - 450 lacs
Residence for Mr. Avtar Singh on Aurangzeb Road, New Delhi - 150 lacs
Farm house for Mr. K.P. Singh at Mandi - 75 lacs
Farm house for Mr. A. Sahay at Sanik Farms, Delhi - 60 lacs

COMMERCIAL:

'Deep' Cinema and Commercial Complex at Ashok Vihar, Delhi - 600 lacs
'Rajnagar District Centre', Ghaziabad
Commercial Complex on Pusa Road, New Delhi - 400 lacs
'EBONY' Departmental store at South Extension, New Delhi, - 250 lacs
'PALM COURT' Office building at Gurgaon - 2400 lacs

INSTITUTIONAL AND EDUCATIONAL:

Dr. B.R. Ambedkar University at Lucknow - 60000 lacs in 2 phases,
South African High Commission at Vasant Vihar, New Delhi - 125 lacs
Consulate General of South Africa, Bombay - 255 lacs.



INTERIOR FOR COAI AT NEW DELHI

INDUSTRIAL:

Tannery for Aero at Jambul, Kazakhstan- 77 Million Roubles
Shoe Factory for Reebok at Sonipat - 500 lacs
Shoe factory for Moja shoes at Sonipat - 700 lacs
Shoe Upper factory at NOIDA for Woodland shoes - 150 lacs
Mini - Cement Plant for Ganga Cement, Jodhpur - 75 lacs
Oil Extraction Plant for Darshan Oil Mills, Aligarh - 250 lacs
Oil Refinery for Darshan Oil Mills, Aligarh - 330 lacs
Vanaspati plants for Darshan Oil Mills, Aligarh - 220 lacs
Tupperware factory and office block, at Gurgaon - 220 lacs
PS Press Services, Press at NOIDA - 140 lacs

INTERIORS:

‘TITAN WATCHES’ Showrooms all over North India - 6 to 10 lacs each
Mitsubishi Corporation office at Barakhamba Road, New Delhi -75 lacs
Office for ‘Aero Group of Companies’ at New Delhi and Moscow - 150 lacs
Office for ‘Haryana Petro-Chemicals Ltd.’ At New Delhi - 45 lacs
Show rooms for Reebok, 35 locations, all over India - 350 lacs
Tupperware office, at Gurgaon - 45 lacs



INTERIOR FOR REEBOK CORPORATE OFFICE AT BIJWASAN

Joined Fountainhead in 1999

LIST OF SERVICES PROVIDED:

Fountainhead is engaged in providing professional consultancy services in the field of architecture, interior design, Landscape design and turnkey interior projects. An itemized list of services presented below:

FOR PROFESSIONAL DESIGN SERVICES:

- Project planning and Program Finalisation.
- Preliminary cost estimates for planning purpose.
- Architectural Design Services.
- Preparation of Presentation Drawing
- 3D Modeling and Animation.
- Landscape Design Services.
- Interior Design Services.
- Design of Engineering Services
- Provide Technical support for approvals from statutory bodies.
- Design co-ordination between various design agencies.
- Preparation of construction Drawings
- Preparation of Tender documents.
- Preparation of detailed bill of quantities and specification for construction
- Preparation of detailed cost estimates.
- Tendering and selection of contractors for construction.
- Periodic Supervision of work done at site.
- Certification of contractors running bills and Evaluation of work done.
- Preparation of As Built Drawings.



ENGINEERING CONSULTANTS ASSOCIATED WITH THE COMPANY:

- **STRUCTURAL DESIGN**

- M/s Kirti Structural Consultants Pvt. Ltd.
- M/s Tandon Consultants Pvt. Ltd.
- M/s Vijay Rewal & Associates
- M/s BMSF Design Consultants Pvt. Ltd.
- M/s ST.AR. Consulting Engineers
- M/s LKT Engineering Consultant Ltd.
- M/s Vintech Consultants

- **ELECTRICAL & FIRE DETECTION DESIGN**

- M/s Kanwar Krishen Associates Pvt. Ltd.
- M/s Electrical Consulting Engineers
- M/s Analyst Consultants

- **SANITARY AND PLUMBING DESIGN**

- M/s Techno Engineering Consultants

- **HVAC DESIGN**

- M/s Kanwar Krishen Associates Pvt. Ltd.
- M/s Harvex Consultancy Services

- **FIRE FIGHTING DESIGN**

- M/s Techno Engineering Consultants
- M/s P.N. Ghosh & Associates (P) Ltd.

- **LANDSCAPE DESIGN**

- M/s Positive Design Ventures Pvt. Ltd. (Studio DP Group)

- **SITE SURVEY**

- M/s ABM Engineering & Surveyors
- M/s Cengrs Geotechnica Pvt. Ltd.

- **TRAFFIC MANAGEMENT**

- M/s A. K. Sharma & Partners

- **GREEN BUILDING**

- M/s Deependra Prashad Architects & Planners
- M/s Green Horizon Consulting LLP



Uttam Nagar Metro Station



Uttam Nagar Metro Station



Uttam Nagar Metro Station

LIST OF METRO PROJECT TILL DATE:

Preparation of Detailed Architectural designs including designs and coordination of all building related services such as Electrical, Plumbing & Water Supply, Fire Detection & Suppression, HVAC, and Signage. Scope covers all stations.

- **Contract no. DM/C/DD/COR-OF/020:** Detailed Design of two number of RRTS elevated Stations (i.e. **Sarai Kale Khan and New Ashok Nagar** including Multimodal Integration Scheme), approx. 11km Elevated Viaduct (from Sarai Kale Khan upto Elevated RRTS Ramp near Khichripur and Sarai Kale Khan to Jungpura Stabling yard), Stabling Yard and Detailed Master Plan of approx. 12 Ha. Land parcel at Jungpura for NCRTC (**2019- Design in Progress**).
- **Contract DCDD-01(R):** Detail Design Consultant (DDC) for Architectural works for **Inderlok - Indraprastha (UG) and Majlis Park – R.K. Ashram (UG & Elevated) Corridors of Phase-IV** of Delhi MRTS projects for DMRC (**2018- Design in Progress**)
- Development of Roof Design of **02 Elevated Stations** (Ahmedabad Station & Vadodara Station) of the Project for the Construction of Mumbai Ahmedabad High Speed Rail Project for AZUSA SEKKEI Com. Ltd. **2018- Design in Progress**)
- Detail Design Consultancy Services for Architectural Design, Structure & E&M works of **03 Elevated Stations** namely- Ahmedabad Station, Varodara Station & Sabarmati Station on **Mumbai-Ahmedabad High Speed Railway Project** for Japan International Consultants (**2018**)
- Provide Consultancy Services defined therein in connection with General Consultancy for **Mumbai-Ahmedabad High Speed Railway Project** for Detailed Design for Japan International Consultants (**2018**)
Preparation of Architectural Technical Specifications, Detailed Estimate, Rate Analysis and Tender Drawings.
- Preparation of Station Development of **Sabarmati Railway Station** for Indian Railway Stations Development Corporation Ltd. (**2018- Design in Progress**)
- **Package UG01 (02 Nos. Underground Stations):** Detail Design Consultancy Services for Architectural Design of **02 Nos. Underground Stations- Kalupur & Kankaria East Stations** for Ahmedabad Metro Rail Project, Phase-1 (**2017- Construction in Progress**)
- **Package UG02 (02 Nos. Underground Stations):** Lead Design Consultant (LDC) for Architectural Design of **02 Nos. Underground Stations- Shahpur & Ghee kanta Station** for Ahmedabad Metro Rail Project (**2017- Construction in Progress**)

LIST OF METRO PROJECT TILL DATE:

- Detailed Design Consultancy (DDC) Service for **02 (Two) number of Rolling Stock Depot at Mihan and Hingna** at Nagpur for Nagpur Metro Rail Corporation Ltd. **(2016- Construction in Progress):**
- Detail Design Consultancy Services for Architectural Design of **04 Nos. Underground Stations** of Mumbai Metro Line-3, UG Packages-05 in Mumbai. **(2016- Construction in Progress):**
- Detail Design Consultancy Services for Architectural Design of **1 No. Underground Station (Bimanbandar)** of Kolkata Metro in Kolkata. **(2016- Construction in Progress):**
- **Underground Railway Station** Design Review Services located in Bandra-Kurla Complex, at Mumbai for Nikken Sekkei Ltd. –**Architecture and MEP (2018)**
- Providing Architectural Support Services for **03 Nos. Underground stations at Lucknow Metro Rail. (2017-2018)**
- Consultancy Services for Detailed Structural, Architectural, Plumbing, E&M, HVAC, Fire Fighting Services Design of **Gyaspur Depot cum Workshop** for Ahmedabad Metro for RITES Ltd. **(2015-2018):**
- Consultancy Services for assistance in preparation of Architectural, Structural, E&M, HVAC, Fire Fighting, BMS, Solar, PHE Services Design of **Apparel Park Depot cum Workshop** for Ahmedabad Metro for RITES Ltd. **(2015-2018):**

Package- ANDS1, 2 & 3: Detail Design Consultancy (DDC) services for twenty three (23) elevated metro stations from Kavi Subhash (New Garia) – Airport Corridor of Kolkata Metro Railway Line for Rail Vikas Nigam Limited (RVNL) **(2012- Construction in Progress):**

1. Kavi Subhash (New Garia)
2. Satyajit Roy
3. Jyotirindra Nath Nandi (Mukund Pur)
4. Kavi Sukanta (Klika Pur)
5. Hemendra Mukherjee (Ruby Hospital)
6. VIP Bazar
7. Ritwik Ghatak (Bantala Road)
8. Barun Sengupta (Science City)
9. Beliaghata
10. Gour Kishore Ghosh (Chingrighata)
11. Nicco Park
12. Salt Lake Sector V
13. Technopolis
14. Bidhan Nagar
15. SUB CBD- 1
16. CBD- 1
17. Kalakhetra (CBD- 2)
18. New Town
19. Convention Centre
20. Sub-CBD- 2 (HDCO)
21. Titumir
22. Rabindra Tirtha (Rajarhat Road)
23. VIP Road



LIST OF COMPLETED METRO PROJECT TILL DATE:

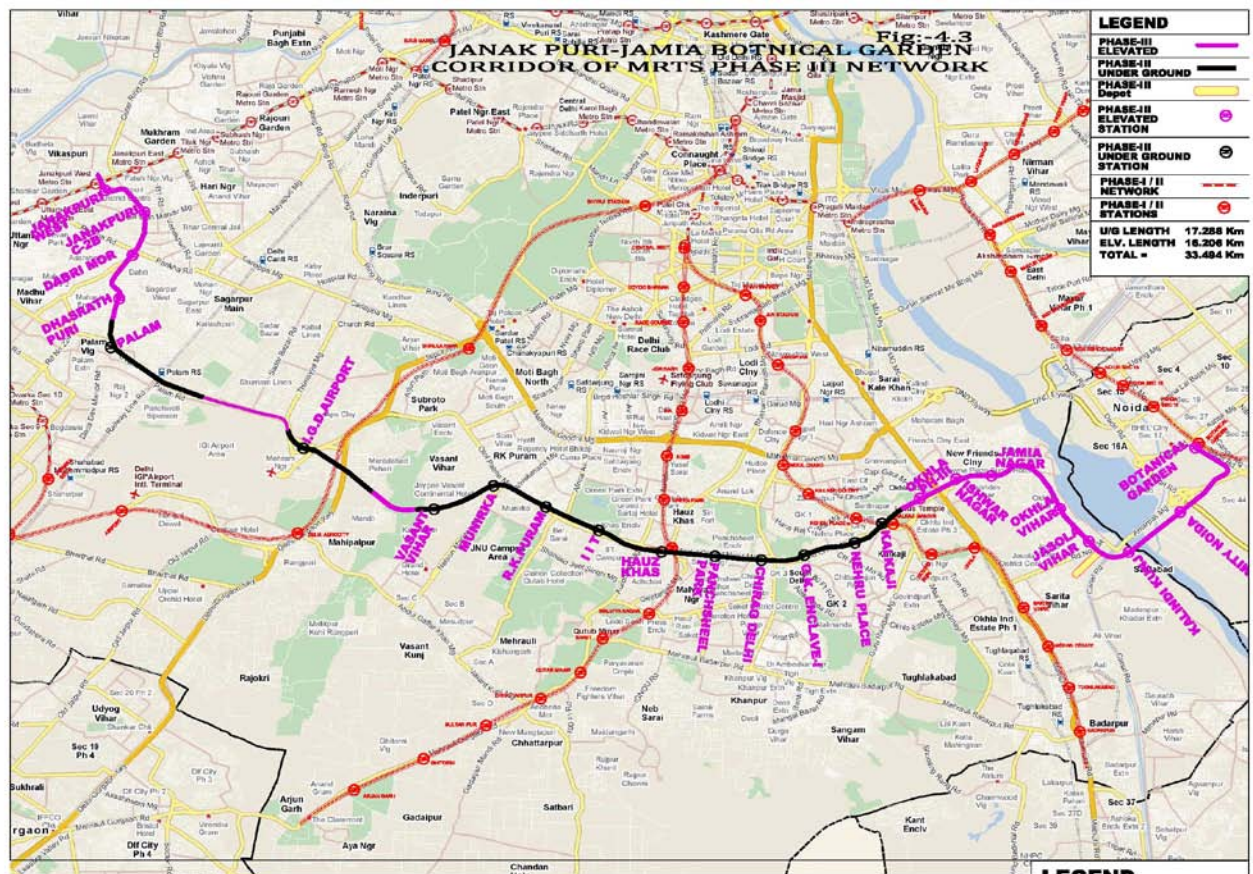
- **Contract CCDD2-** Detailed Design Consultant (DDC) for Architectural and E&M Works of **15 Underground and 10 Elevated Stations** for proposed phase-III corridor between Janakpuri (West) to Botanical Garden (Line-8) of DMRC for AYESA (2011-2018):

Prime Consultant : Agua Y Estructuras S.A. (AYESA)

Promoters : DMRC

Detailed Design Consultant : Fountainhead

1	Botanical Garden	10	Nehru Place	19	Shankar Vihar
2	Amity Noida	11	G.K. Enclave	20	IGD Airport
3	Kalindi Kunj	12	Chirag Delhi	21	Sadar Bazar
4	Jasola Vihar	13	Panchsheel Park	22	Palam
5	Okhla Vihar	14	Hauz Khas	23	Dashrath Puri
6	Jamia Nagar	15	IIT	24	Dabri Mor
7	Iswar Nagar	16	R.K. Puram	25	Janakpuri West
8	Okhla Ph-III	17	Munirka		
9	Kalkaji	18	Vasant Vihar		



ROUTE MAP OF LINE-8 (JANAKPURI – JAMIA BOTANICAL GARDEN CORRIDOR)

LIST OF COMPLETED METRO PROJECT TILL DATE:



VIEW OF ELEVATED STATION OF LINE-8



CONCOURSE LEVEL VIEW OF ELEVATED STATION OF LINE-8

LIST OF COMPLETED METRO PROJECT TILL DATE:



CONCOURSE LEVEL VIEW OF ELEVATED STATION OF LINE-8



PLATFORM LEVEL VIEW OF ELEVATED STATION OF LINE-8

LIST OF COMPLETED METRO PROJECT TILL DATE:



SUBWAY VIEW OF UNDER GROUND STATION OF LINE-8



CONCOURSE LEVEL VIEW OF UNDER GROUND STATION OF LINE-8



CONCOURSE LEVEL VIEW OF UNDER GROUND STATION OF LINE-8

LIST OF COMPLETED METRO PROJECT TILL DATE:



PLATFORM LEVEL VIEW OF UNDER GROUND STATION OF LINE-8



PLATFORM LEVEL VIEW OF UNDER GROUND STATION OF LINE-8

- **Development of Preliminary design for Prototype Underground MRTS station** incorporating various functional requirements, Ventilation and Air-conditioning space required E&M space, TBM interfaces ingress-egress, structures at street level etc. for Indus Consultrans Pvt. Ltd. (2013-2014):

LIST OF COMPLETED METRO PROJECT TILL DATE:

- **Seven Elevated Metro Stations for Bangalore Metro at Bangalore: (2008-2014):**

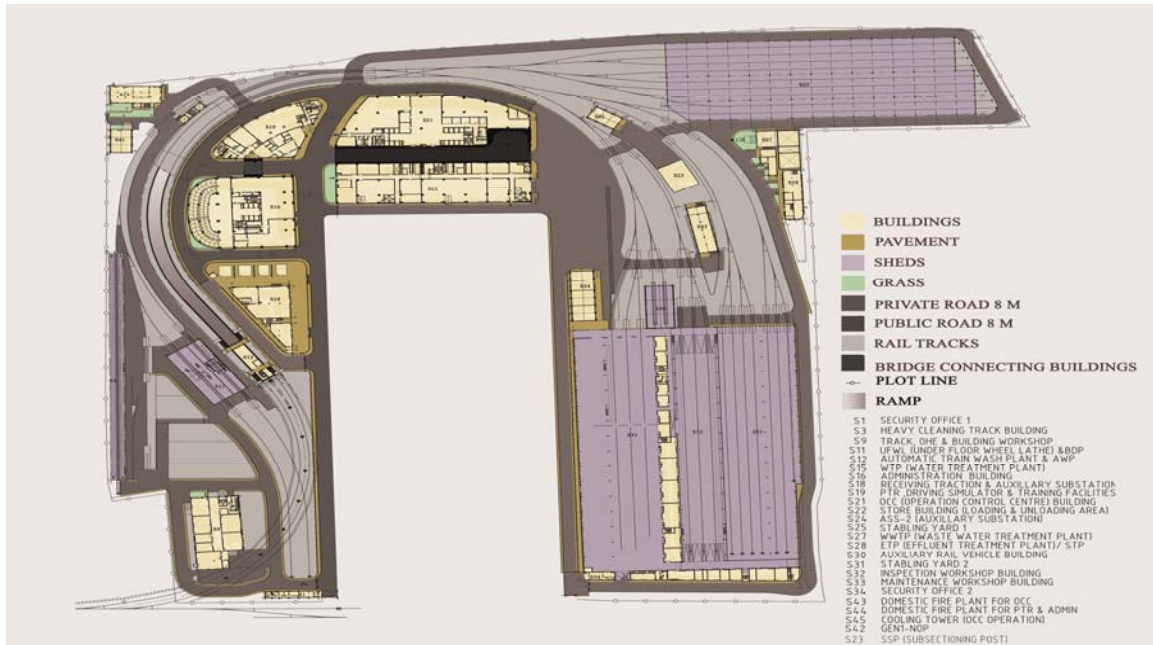
- | | | | |
|---|----------------------|---|-------------------------|
| 1 | Yeshwantpur Station | 5 | Mallesheshwaram Station |
| 2 | Mahalaxmi Station | 6 | Rajaji Nagar Station |
| 3 | Soap Factory Station | 7 | Swastik Station |
| 4 | Kuvempu Station | | |



VIEW OF BANGALORE METRO STATION

LIST OF COMPLETED METRO PROJECT TILL DATE:

- Metro Depot of Mumbai Metro One Pvt. Ltd. at Mumbai for Parsons Brinckerhoff International Inc.: (2007 to 2013):



SITE PLAN OF MUMBAI DEPOT

- Twelve Elevated Metro Stations of Mumbai Metro One Pvt. Ltd. at Mumbai for Parsons Brinckerhoff International Inc.: (2007 to 2013):

- | | |
|----------------------|--------------------------|
| 1 Andheri Station | 7 Airport Road Station |
| 2 Ghatkopar Station | 8 Asalpha Road Station |
| 3 WEH Station | 9 Chakala Station |
| 4 Azad Nagar Station | 10 Marol Naka Station |
| 5 DN Nagar Station | 11 Saki Naka Station |
| 6 Versova Station | 12 Subhash Nagar Station |



VIEW OF MUMBAI METRO STATION

LIST OF COMPLETED METRO PROJECT TILL DATE:

- **Miyapur Depot of Hyderabad Metro Rail Project for L&T: (2012-2013)**



MIYAPUR DEPOT

- **Preparation of Plans and Cost Estimates for stations and elevated via ducts for Dwarka Station (incl) to Najafgarh (incl) Metro Route for Cobra Instalaciones Y Servicios, S.A. (2011 to 2011)**

LIST OF COMPLETED METRO PROJECT TILL DATE:

- **Contract BADD13: One Elevated Metro Station in Phase-II “Kaushambi”** for DMRC at Delhi (2009-2011)



KAUSHAMBI METRO STATION

- **Contract BADD14: One Elevated Metro Station in Phase-II “Vaishali”** for DMRC at Delhi (2009-2011)



LIST OF COMPLETED METRO PROJECT TILL DATE:



VAISHALI METRO STATION

LIST OF COMPLETED METRO PROJECT TILL DATE:

- **Four Underground & One Elevated Metro Stations** (Delhi Airport Metro Express Line) for Delhi Airport Metro Express Pvt. Ltd. at Delhi: **(2008-2010):**

- | | | | |
|---|-------------------------|---|--------------|
| 1 | New Delhi Station | 4 | NH-8 Station |
| 2 | Shivaji Stadium Station | 5 | IGA Station |
| 3 | Dhaura Kuan Station | | |



NEW DELHI METRO STATION

LIST OF COMPLETED METRO PROJECT TILL DATE:



DHAULA KUAN METRO STATION



NEW DELHI METRO STATION

LIST OF COMPLETED METRO PROJECT TILL DATE:

- **Metro Depot & Corporate Headquarter** for Delhi Airport Metro Express Pvt. Ltd. at Dwarka, Delhi: (2008-2010):



DEPOT & CORPORATE HEADQUARTER AT DWARKA, NEW DELHI

- **Contract BADD3: Three Elevated Metro Stations** in Phase-II for DMRC at Delhi (2006 to 2009):
 1. Mayur Vihar Phase- I Station
 2. Mayur Vihar Phase- I, Extension Station
 3. New Ashok Nagar Station



NEW ASHOK NAGAR METRO STATION

LIST OF COMPLETED METRO PROJECT TILL DATE:

- **Contract BADD5: Three Elevated Metro Stations** in Phase-II for DMRC at Delhi (2006 to 2009):
 1. Laxmi Nagar Station
 2. Scope Tower Station
 3. Preet Vihar Station

- **Contract BADD7: Three Elevated Metro Stations** in Phase-II for DMRC at Delhi (2006 to 2007):
 1. G.T.B. Enclave Station
 2. Jhilmil Station
 3. Dilshad Garden Station

- **Contract DD3B: Twenty Elevated Metro Stations** in Line-3 for DMRC at Delhi (2002 to 2005):

1. R.K. Ashram Station	11. Tagore Garden Station
2. Jhandewalan Station	12. Subhash Nagar Station
3. Karol Bagh Station	13. Tilak Nagar Station
4. Rajendra Place Station	14. Janakpuri East Station
5. Patel Nagar Station	15. Janakpuri West Station
6. Shadipur Station	16. Uttam Nagar East Station
7. Kirti Nagar Station	17. Uttam Nagar West Station
8. Moti nagar Station	18. Nawada Station
9. Ramesh Nagar Station	19. Dwarka Mor Station
10. Rajouri Garden Station	20. Dwarka Statio



KIRTI NAGAR METRO STATION

LIST OF COMPLETED METRO PROJECT TILL DATE:

- **Contract DD1H(A): Six Elevated Metro Stations for DMRC at Delhi (2001 to 2004):**

1	Kanhaiya Nagar Station	4	Pitampura Station
2	Lawrence Road Station	5	Rohini East Station
3	Kohat Enclave Station	6	Rohini West Station



KANHAIYA NAGAR METRO STATION

- **Shastri Park Station and OCC Building for DMRC at Delhi: (1999 to 2001):**
 1. Shastri Park Station. (Inclusive of structure)



SHASTRI PARK METRO STATION

PRE-BID SERVICES FOR METRO PROJECTS:

Preliminary Architectural Design & Preparation of Preliminary Quantities for Architecture, Electrical, HVAC, Plumbing & Fire Fighting.

- **Hyderabad MRTS Project at Hyderabad: Preparation of Bid Documents: (2007 to 2008)**

Preliminary Architectural Design of 63 Stations & 3 Depots.

- **Monorail for Mumbai Metro: at Mumbai: (2008)**

Preparation of Detailed Architectural designs.

- **Pre-bid for Kolkata Metro at Kolkata: (2009)**

UG-1 Stations:

1. Mahakaran Station
2. Howrah Maidan Station
3. Howrah Station

UG-2 Stations:

1. Central Station
2. Phool Bagan Station
3. Sealdah Station

- **DPR Phase-III for DMRC at Delhi: (2009-2010)**

Preparation of Detailed Architectural designs.

1. Noida Sector-18 Station
2. Jasola Station
3. Mayur Vihar Ph-I Station
4. Rajouri Garden Station
5. Malviya Nagar Station
6. AIIMS Station
7. New Delhi Station
8. Mandi House Station
9. Lajpat Nagar Station
10. Shivaji Station
11. Netaji Subhash Nagar Station
12. Azadpur Station
13. Anand Vihar Station

PRE-BID SERVICES FOR METRO PROJECTS:

- **Pre-bid for Chennai Metro at Chennai: (2010)**

Packet-1 Stations:

1. Highcourt Station
2. Chennai Central Station
3. Mannadi Station
4. Wasermanpet Station

Packet- 4 Stations:

1. Nehru Park Station
2. Kilpauk Medical College Station
3. Pachaiappa College Station

Packet-5 Stations:

1. Anna Nagar East Station
2. Anna Nagar Tower Station
3. Egmore Station
4. Shenoy Nagar Station
5. Tirumanglam Station

PRE-BID SERVICES FOR METRO PROJECTS:

- **PRE-BID FOR MUMBAI METRO LINE-3 AT MUMBAI: (2015)**

- 1. PACKAGE UGC-01:**

- Cuffe Parade Station
- Vidhan Bhavan station
- ChurchGate Station
- Hutatma Chowk Station

- 2. PACKAGE UGC-02:**

- CST Metro Station
- Kalbadevi Station
- Girgaon Station
- Grant Road Station

- 3. PACKAGE UGC-03:**

- Mumbai Central Metro Station
- Mahalaxmi Station
- Science Museum Station
- Acharya Atrey Chowk Station
- Worli Station

- 4. PACKAGE UGC-05:**

- Dharavi Station
- BKC Station
- Vidya Nagri Station
- Santa Cruz Station

- 5. PACKAGE UGC-06:**

- Sahar Road Station
- CSIA Domestic Station (T1 Terminal Forecourt)
- CSIA International Station (T2 Terminal Forecourt)

- 6. PACKAGE UGC-07:**

- Marol Naka Station
- MIDC Station
- SEEPZ Station

PRE-BID SERVICES FOR METRO PROJECTS:

- **Architectural Design of Metro Stations for review and updation of DPRs of Mumbai Metro Rail Corridor from D.N. Nagar to Dahisar & from Andheri (E) to Dahisar for DMRC: (2015)**

Preparation of Detailed Architectural designs & Reports.

List of Stations Andheri to Dahisar Corridor

1. Andheri
2. Shankarwadi
3. JVLJR Jn.
4. Bombay Exhibition
5. HUB mall
6. Goregaon
7. Aarey Road Jn.
8. ITT Bhatti Jn.
9. Kurar Village
10. Bandongri
11. Mahindra & Mahindra
12. Thakur Complex
13. Borivli Bus Stop
14. Borivli Omkareshwar
15. Shrinath Nagar
16. Dahisar (E)

List of Stations Dahisar (E) to D.N. Nagar Corridor

1. Dahisar (E)
2. Dahisar (W)
3. Rushi Sankul
4. I C Colony
5. LIC Colony
6. Don Bosco
7. Kastur Park
8. Ekata Nagar
9. Kandivali Nagar
10. Charkop
11. Malad Metro
12. Kasturi Park
13. Bangur Nagar
14. Oshiwara Metro
15. Samartha Nagar
16. Shastri Nagar
17. D. N. Nagar

PRE-BID SERVICES FOR METRO PROJECTS:

- **Architectural Design of Metro Stations for updation of DPR of Mumbai Metro Corridor from Kasarwadavli to Carnac Bandar Station : (2016)**

Preparation of Detailed Architectural designs & Reports.

List of Stations of Kasarwadavli to Wadala Corridor

1. Bhakti Park Metro
2. Wadala TT
3. Anik Nagar Bus Depot
4. Suman Nagar
5. Siddharth Colony
6. Amar Mahal Junction
7. Garodia Nagar
8. Pant Nagar
9. Laxmi Nagar
10. Shreyes Cinema
11. Godrej Company
12. Vikhroli Metro
13. Surya Nagar
14. Gandhi Nagar
15. Naval Housing
16. Mangatram Petrol Pump
17. Bhandup Metro
18. Shangrila
19. Sonapur
20. Mulund Fire Station
21. Mulund Naka
22. Teen Haath Naka (Thane)
23. RTO Thane
24. Mahapalika Marg
25. Cadbury Junction
26. Majiwada
27. Kapurbawdi
28. Manpada
29. Tikuji-Ni-Wadi
30. Dongari Pada
31. Vijay Garden
32. Kasarwadavli

PRE-BID SERVICES FOR METRO PROJECTS:

- **PRE-BID FOR METRO LINK EXPRESS FOR GANDHINAGAR AND AHMEDABAD (MEGA) CO. LTD. AT AHMEDABAD: (2016)**

1. PACKAGE UGC-1:

- Kalupur Railway Station
- Kankariya East Station

2. PACKAGE UGC-2:

- Gheekanta Station
- Shahpur Station

PRE-BID SERVICES FOR METRO PROJECTS:

- **PRE-BID WORKS FOR MAURITIUS METRO EXPRESS PROJECT- LIGHT RAIL TRANSIT (LRT): (2017)**

Consultancy Services on Architectural, Landscaping and MEP Works, of at-grade and elevated alignment, stations, Depot, including drainage works etc. (19 Stations & 1 Depot).

List of Stations

1. Curepipe Interchange over Bus Interchange Station.
2. Curepipe North Station.
3. Floreal Station.
4. Sadally Station.
5. Vacoas Interchange Station.
6. Paimmerstone Station.
7. Phoenix Station.
8. Trianon Station.
9. St. Jean Station.
10. Quatre Bornes Interchange Station.
11. Victoria Avenue Station.
12. Rose Hill Interchange over Bus Interchange Station.
13. Reverend Leburn Station.
14. Beau Bassin Station.
15. Nelson Mandela Station.
16. Black River Road Station.
17. St. Louis Station.
18. Victoria Interchange Station.
19. Immigration Station.

List of Depot

1. RICHELIEU Depot.

INSTITUTIONAL PROJECTS:

- **JAWAHARLAL NEHRU UNIVERSITY, NEW DELHI: (CONSTRUCTION IN PROGRESS)**

Construction / Renovation / Upgradation of Buildings & Infrastructure in Jawaharlal Nehru University.

The scope of new works include concept and detailed design of new buildings like 02 Nos. 200 Bedded Girls Hostel, 4 No. School Buildings, Lecture Theatre Complex, School of Molecular Medicines, Student Cultural Centre, Yoga Hall and Inter Hall Administration.

The scope of renovation works include concept and detailed design of 100 classrooms, tutorials, committee rooms, seminar rooms, audio visual labs, 3 Auditorium, 2 Nos. Guest Houses, Cyber Library and Reading Hall, City Centre and USIC & CIF Buildings.

The scope of upgradation of infrastructure works include internal roads, substations, addition of DG sets, internal electrical works, fire protection system, Fire alarm system and signage and provision of air-conditioning in several buildings.

All the three works are from concept stage to completion including tendering process and supervision during construction.



JNU SITE PLAN

The above is the first phase of activity estimated @ 32 crores. The Second Phase of activities to start from March 2007 is projected at 100 crores.

Construction of third phase in progress.

INSTITUTIONAL PROJECTS:



LECTURE THEATRE COMPLEX AT JNU NEW DELHI



KOENA HOSTEL BUILDING AT JNU NEW DELHI

INSTITUTIONAL PROJECTS:



SCHOOL BUILDING AT JNU NEW DELHI



SHIPRA HOSTEL-II BUILDING AT JNU NEW DELHI

INSTITUTIONAL PROJECTS:

- **SCHOOL FOR SANA REALTORS: (2008)**

Designing, detailing, Interior and execution of the School at Vasant Vihar, New Delhi



SOUTH ELEVATION



NORTH ELEVATION

- **2 SCHOOLS FOR ANSAL API AT JODHPUR AND AJMER. (2009):**

Preparation of Detailed Architectural and Structural designs including designs and coordination of all building related services such as Electrical, Plumbing & Water Supply, Fire Detection & Suppression, HVAC, and Signage.

INSTITUTIONAL PROJECTS:

- **PLANNING AND CONSTRUCTION OF INSTITUTIONAL BUILDINGS, HOSTEL AND RESIDENTIAL STAFF QUARTERS AND RENOVATION OF EXISTING BUILDING ETC. FOR MNNIT ALLAHABAD: (2008-2013)**

Preparation of Detailed Architectural and Structural designs including designs and coordination of all building related services such as Electrical, Plumbing & Water Supply, Fire Detection & Suppression, HVAC, and Signage.



MNNIT ALLAHABAD – HOSTEL BLOCK

INSTITUTIONAL PROJECTS:



MNNIT ALLAHABAD – HOSTEL BLOCK



MNNIT ALLAHABAD – RESIDENTIAL STAFF QUARTERS

INSTITUTIONAL PROJECTS:

- Master Planning, Architectural Engineering Services and Project Management for Additional Facilities at Existing Campus of Indian Institute of Mass Communication, Sanchar Marg, Dhenkanal, Orissa (2011-2015).



**SITE PLAN OF INDIAN INSTITUTE OF MASS COMMUNICATION,
DHENKANAL, ORISSA**

INSTITUTIONAL PROJECTS:



TYPE-2 QUARTERS OF INDIAN INSTITUTE OF MASS COMMUNICATION

INSTITUTIONAL PROJECTS:



TYPE-4 QUARTERS OF INDIAN INSTITUTE OF MASS COMMUNICATION

INSTITUTIONAL PROJECTS:



TYPE-5 QUARTERS OF INDIAN INSTITUTE OF MASS COMMUNICATION

INSTITUTIONAL PROJECTS:



**GUEST HOUSE BUILDING OF INDIAN INSTITUTE OF MASS
COMMUNICATION**

INSTITUTIONAL PROJECTS:

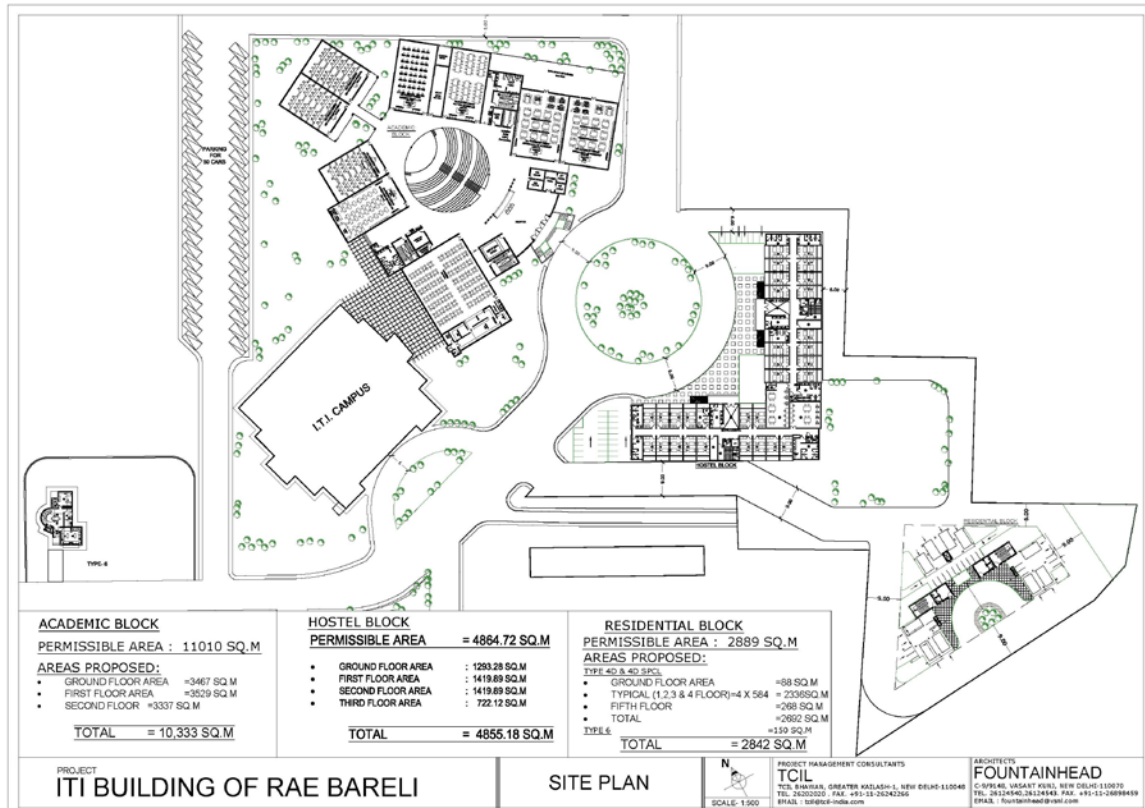
- Construction of Training Academy of Direct Taxes Regional Training Institute, Mohali.



**TRAINING ACADEMY OF DIRECT TAXES REGIONAL TRAINING
INSTITUTE, MOHALI**

INSTITUTIONAL PROJECTS:

- Construction of ITI Building at Raibareli (Uttar Pradesh) (2012-2016):



SITE PLAN OF ITI CAMPUS AT RAEBARELI (U.P.)



ARIEL VIEW OF ITI CAMPUS AT RAEBARELI (U.P.)

INSTITUTIONAL PROJECTS:



ACADEMIC BLOCK VIEW OF ITI CAMPUS AT RAEBARELI (U.P.)



ACADEMIC BLOCK VIEW OF ITI CAMPUS AT RAEBARELI (U.P.)

INSTITUTIONAL PROJECTS:



HOSTEL BLOCK VIEW OF ITI CAMPUS AT RAEBARELI (U.P.)



HOSTEL BLOCK VIEW OF ITI CAMPUS AT RAEBARELI (U.P.)

INSTITUTIONAL PROJECTS:



HOUSING BLOCK VIEW OF ITI CAMPUS AT RAEBARELI (U.P.)



HOUSING BLOCK VIEW OF ITI CAMPUS AT RAEBARELI (U.P.)

INSTITUTIONAL PROJECTS:

C/o New Administrative and Academic Building, New Infrastructure Development Project at IIPS, Deonar, Mumbai (Tender Stage)

SH: Consultancy Services (Architectural planning/Designing of Multi storied Educational / Institutional buildings including civil and E.M. services)



MAIN BUILDING OF IIPS, DEONAR, MUMBAI

HOUSING PROJECTS:

- **GROUP HOUSING AT BATHINDA FOR PUDA: (2013-2016)**

Designing and Detailing of 2 BHK, 3BHK & CLUB, Bathinda at Punjab.

Preparation of Concept Design, Design Development to incorporate comments and observations, Detailed Architectural and Structural designs including designs and coordination of all building related services such as Electrical, Plumbing & Water Supply, Fire Detection & Suppression, HVAC, Green Building, Security & Monitoring System, Telephone, Lifts, Landscape, Recreation and Signage. Scope includes preparation of design, BOQ, Specifications, Estimate, Statutory Compliances, Site supervision and preparation of as-built drawings.



GROUP HOUSING FOR PUDA AT BATHINDA

HOUSING PROJECTS:



GROUP HOUSING FOR PUDA AT BATHINDA

HOUSING PROJECTS:

- Architectural/Engineering Consultancy Services for Construction of Type-V Quarters in Railway Officers Colony at Tilak Bridge, New Delhi for NPCC (2014) Construction in progress:



View & Site Plan of Type-V Quarters in Railway Officers Colony at Delhi

HOUSING PROJECTS:

- **Detailed Design Consultant (DDC) for Civil, Architectural and E&M Works for Delhi Metro Rail Corporation Ltd. at Shastri Park, Delhi (2014) Construction in Progress:**

- 1) Transit Accommodation cum Hostel Apartments
- 2) Working Women Hostel

Preparation of Detailed Architectural and Structural designs including designs and coordination of all Building related services such as Electrical, Plumbing & Water Supply, Fire Fighting, Cost Estimate, Tender Drawings, Tender Documents & Municipal Approval.



View of Working Women Hostel for DMRC at Delhi

HOUSING PROJECTS:

Design Consultancy Services for Construction of Multi-Storey Residential Staff Quarters (Phase -I) at MUTTOM including planning and design of Architectural, Civil, E&M, Finishing, Water Supply, Sanitary Installations, HVAC, External Development Works, Horticulture and Landscaping-Design, Detailing, Tender documents with BOQ, Construction Interfacing and Validation. **(2015) Construction in progress:**



KOCHI HOUSING VIEWS

HOUSING PROJECTS:

- **GROUP HOUSING (AQUAPOLIS) BLOCKS D & S1, AT DOONDAHERA. GHAZIABAD, U.P.:(2008-2009)**

Multi-storied housing for Ansal API. (TOWERS 15 FLOORS AND 30 FLOORS) Scope includes detail Architectural design and co-ordination of services, for concept plans prepared by Chelsea West Architects, New York, USA.



GROUP HOUSING (AQUAPOLIS) BLOCKS D & S1, AT DOONDAHERA.

HOUSING PROJECTS:

- **B5 TYPE VILLA FOR ANSAL AT GOLF COMMUNITY, SUSHANT GOLF CITY, LUCKNOW, UTTAR PRADESH.**
- **A5-T1 TYPE VILLA FOR ANSAL AT GOLF COMMUNITY, SUSHANT GOLF CITY, LUCKNOW, UTTAR PRADESH.**



VILLAS FOR ANSAL

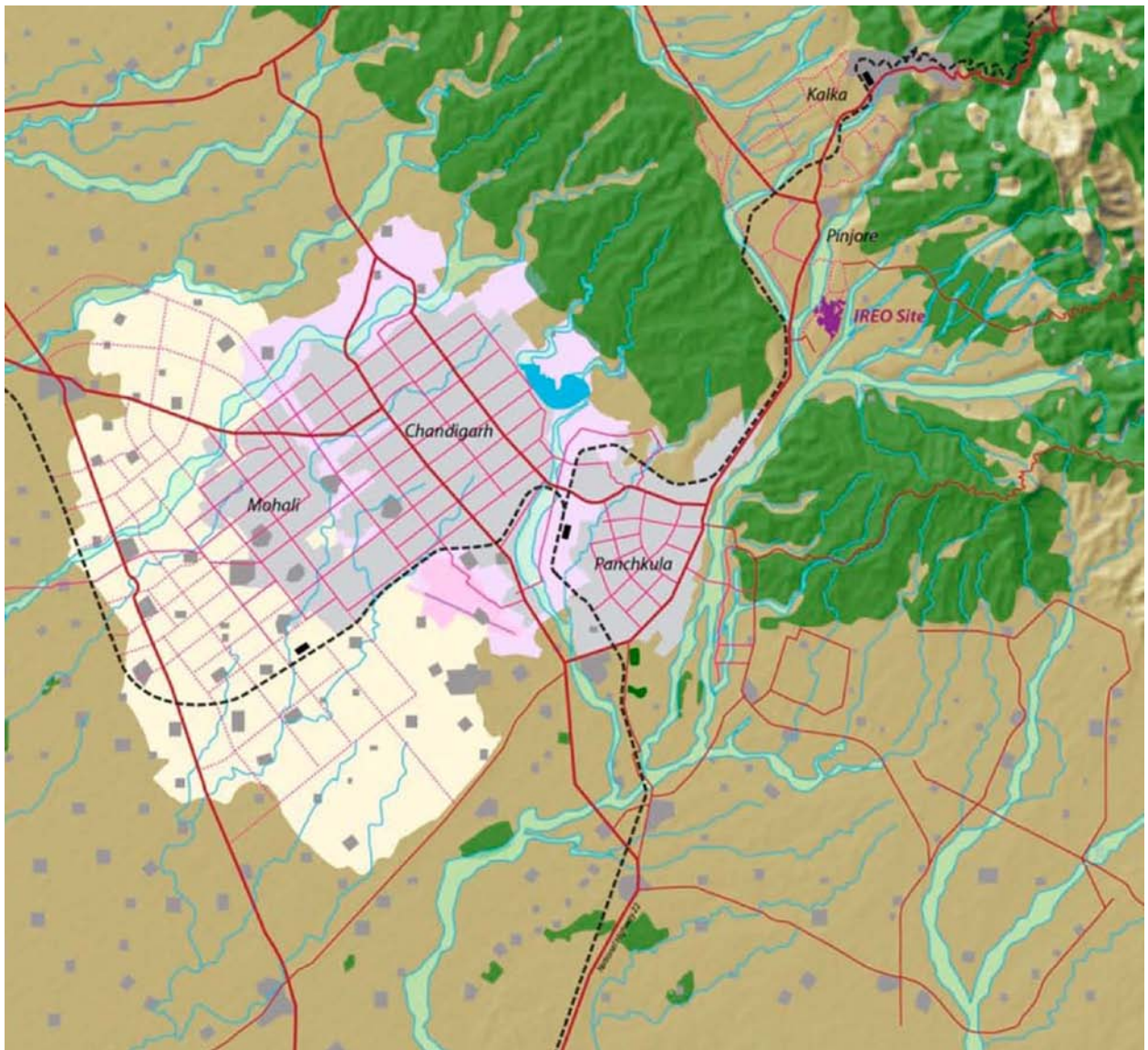
HOUSING PROJECTS:

Integrated Township at Panchkula, Haryana, India

Client : M/s Ireo Fiveriver Pvt. Ltd., Gurgaon.

Preparation of Master Planning, Site Plan, Layout plans, Demarcation plans, Zoning plans
Statutory Approval, Design Development, Tender and Construction Documentation, Construction
and Completion Phase

Detailed Architectural and Structural designs including designs and coordination of all building
related services such as Electrical, Plumbing & Water Supply, Fire Detection & Suppression,
HVAC, and Signage.



CONCEPT LOCATION PLAN OF TOWNSHIP AT PANCHKULA, HARYANA

HOUSING PROJECTS:



Fig 3.0: Proposed Panchkula Landscape Scope

Fig 3.0 Proposed Panchkula Concept Masterplan
TOWNSHIP LOCATION & ACCESS

CONCEPT MASTER PLAN OF TOWNSHIP AT PANCHKULA

HOUSING PROJECTS:

- **SENIOR CITIZEN HOME COMPLEX WELFARE HOUSING SOCIETY, GREATER NOIDA**



SENIOR CITIZEN HOME COMPLEX WELFARE HOUSING SOCIETY, GREATER NOIDA

HOUSING PROJECTS:

- **TDI HOUSING AT GURGAON:**

Designing and Detailing of 5-6 Bedroom luxury air-conditioned high rise condominiums for Taneja Developers, New Delhi.



TDI HOUSING AT GURGAON

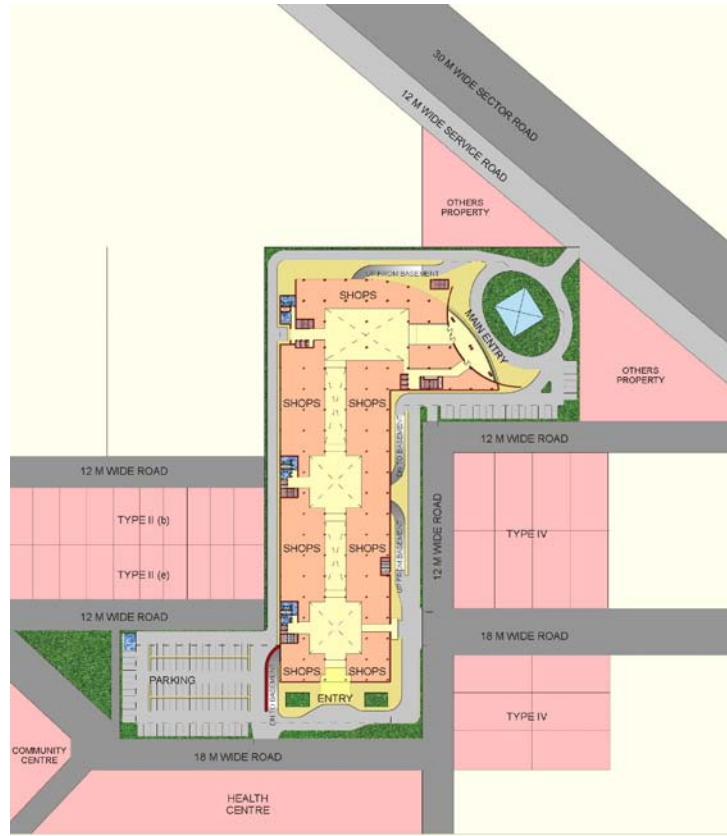
- **ONGC NAGAR AT BHARUCH FOR ONGC**

A self-contained housing for ONGC staff with 600 + dwelling units, Market, Club, Community Centre, STP, Desalination Plant etc. Construction Cost – 7000 Lacs.

REAL ESTATE PROJECTS:

- **COMMERCIAL TOWER FOR ANSAL (2009):**

Designing, detailing, Interior and execution of floors of the Commercial Tower at Palam Vihar, New Delhi.



COMMERCIAL TOWER FOR ANSAL

- **OFFICE TOWER FOR SAUCH INFO SERVES PVT. LTD. AT UDYOG VIHAR (2008-2010):**

Design and detailing of High Rise Tower building, fully air-conditioned.



SIDE ELEVATION



FRONT ELEVATION



REAR ELEVATION

REAL ESTATE PROJECTS:

- **OFFICE TOWER FOR SANA REALTORS AT GURGAON: (2007 to 2010)**
Designing and detailing of High Rise tower building, fully air-conditioned.



OFFICE TOWER FOR SANA REALTORS AT GURGAON

- **SHOPPING COMPLEX FOR ANSALS AT LUCKNOW:**
Preparation of Detailed Architectural and Structural designs including designs and coordination of all building related services such as Electrical, Plumbing & Water Supply, Fire Detection & Suppression, HVAC, and Signage.



SHOPPING COMPLEX AT LUCKNOW

COMMERCIAL PROJECTS:

- **Detailed Design of Construction of IT Park for incubation and other infrastructure facility at block DP, Plot No. 5/1, Sector V, Salt Lake, Kolkata, West Bengal for CPWD. (2015) Construction in Progress:**

Preparation of Concept Design, Design Development to incorporate comments and observations, Detailed Architectural and Structural designs including designs and coordination of all building related services such as Electrical, Plumbing & Water Supply, Fire Detection & Suppression, HVAC, Green Building, Security & Monitoring System, Telephone, Lifts, Landscape, Recreation and Signage. Scope includes preparation of design, BOQ, Specifications, Estimate, Statutory Compliances, Site supervision and preparation of as-built drawings.



VIEW OF IT PARK AT KOLKATA

COMMERCIAL PROJECTS:

- **SHOWROOM & CORPORATE OFFICE FOR SANYA MOTORS: (2008)**



SIDE ELEVATION



FRONT ELEVATION

- **RENOVATION OF GB PANT HOSPITAL: (2008)**
Designing, detailing and execution of floors of the hospital with 3 specialty operation theaters, ICU, etc.
- **3 STAR HOTEL FOR SANA REALTORS AT GURGAON:**
Preparation of Detailed Architectural and Structural designs including designs and coordination of all building related services such as Electrical, Plumbing & Water Supply, Fire Detection & Suppression, HVAC, and Signage.
- **SOFTWARE DEVELOPMENT COMPLEX AT NOIDA:**
24000 SQFT of Covered Space Construction Cost – 2600 Lacs.
- **DEEP COMMERCIAL COMPLEX ASHOK VIHAR, NEW DELHI**
Construction Cost – 1400 Lacs.
- **JASS HOUSE-OFFICE BUILDING AT NEHRU PLACE, NEW DELHI**
Construction Cost. – 222 Lacs.
- **FURNITURE SHOWROOM – EFFECTS**
AT K- 12, GREEN PARK, NEW DELHI – 1995 Construction Cost. – 50 Lacs.
- **REEBOK SHOES, 25 RETAIL OUTLETS**
Nation Wide – 15 Lacs Each.

COMMERCIAL PROJECTS:

- **OFFICE COMPLEX AT BHATINDA FOR HINDUSTAN PETROLEUM CORPORATION LTD. (2012)**
Architectural Consultancy & Engineering Services for proposed office complex.
- **CONSULTANCY SERVICES FOR CONVENIENT AND OFFICE TOWER AT JINDAL GLOBAL CITY, SONEPAT (HARYANA) (2011)**



SITE PLAN OF JINDAL GLOBAL CITY (SONEPAT)

COMMERCIAL PROJECTS:

- **REEBOK CORPORATE HEADQUARTERS**
At Bijwasan, Delhi – 215 Lacs.
- **COMMERCIAL BUILDING AT PATEL ROAD, DELHI – 1999**
Construction Cost. – 1 Crore.



COMMERCIAL COMPLEX AT NAJAFGARH ROAD, NEW DELHI



COMMERCIAL COMPLEX AT NAJAFGARH ROAD, NEW DELHI

RESIDENTIAL PROJECTS:

- **FARMHOUSE FOR MRS. USHA MALHOTRA AT NEW DELHI**



MRS. MALHOTRA FARMHOUSE

- **FARMHOUSE FOR MR. GAGAN CHOPRA AT NEW DELHI**



MR. CHOPRA FARMHOUSE

RESIDENTIAL PROJECTS:

- **MR. G.P. SANGAL'S HOUSE,**
NEW DELHI, Construction Cost. – 55 Lacs.
- **RESIDENCE FOR MR. CHOWDHURY**
SWASTH VIHAR, NEW DELHI – 1989. Construction Cost. – 20 Lacs.
- **RESIDENCE FOR MR. B. P. SINGH**
AT PUNJABI BAGH – 1985, Construction Cost. – 19 Lacs.
- **RESIDENCE FOR MR. K. N. DATT**
DLF, QUTUB ENCLAVE, 92-94, Construction Cost. – 20 Lacs.
- **RESIDENCE FOR MR. B. N. DATT**
DLF, QUTUB ENCLAVE, 92-94, Construction Cost. – 20 Lacs.
- **FARMHOUSE FOR MR. S. MITRA,**
GURGAON, 1994-1995, Construction Cost. – 60 Lacs.
- **RESIDENCE FOR DR. MUKHERJEE**
DLF, QUTUB ENCLAVE, 95-96, Construction Cost. – 30 Lacs.
- **FARMHOUSE FOR MR. S. MITRA,**
GURGAON, 1994-1995, Construction Cost. – 60 Lacs.
- **RESIDENCE FOR MR. A. MATHUR**
DLF, QUTUB ENCLAVE – 1994, Construction Cost. – 60 Lacs.
- **FARMHOUSE FOR MR. S. BIR,**
AT BIJWASAN, NEW DELHI – 1994-1995, Construction Cost. – 50 Lacs.
- **RESIDENCE FOR MR. R. DHAWAN**
GREEN PARK, NEW DELHI – 1995-1996, Construction Cost. – 50 Lacs.
- **RESEDENCE FOR MRS. USHA MALHOTRA AT VASANT VIHAR, NEW DELHI**
- **RESIDENCE FOR MR. N. CHAWLA,**
DLF, 1997 – 1998, Construction Cost. – 40 Lacs.
- **FARMHOUSE FOR MR. DEV,**
SAINIK FARMS, NEW DELHI – 1995-1996, Construction Cost. – 30 Lac

PROJECTS OF CNG STATIONS & PETROL PUMPS:

FUEL RETAIL OUTLETS:

- **CNG FILLING STATIONS for Indraprastha Gas Limited (IGL)**
Designed 118 Retail Outlets in Delhi.
Stations include Mother, Online, Daughter, Mega Stations, and station up-gradations. Scope includes Concept design, Detail Design, Approval drawings, Periodic Site Supervision etc. and Retail Visual Identity (RVI).



SITE PHOTO OF CNG STATION OF IGL

- **OFFICE TOWER, FOOD COURT & CNG FILLING STATIONS for Siti Energy Ltd:**
Designing, detailing, Interior and execution of floors of the Buildings at Muradabad, U.P.



CNG STATION OF SITI ENERGY



SITE PLAN

PROJECTS OF CNG STATIONS & PETROL PUMPS:

- **CNG FILLING STATIONS for Gujarat Adani Energy Ltd. (GAEL)**
Completed 02 CNG Mother Stations at Ahmedabad. Scope included Concept design, Detail design, Approval drawings, Periodic Site evaluation etc. and Retail Visual Identity (RVI)



CNG FILLING STATION FOR GAEL

- **CNG FILLING STATIONS for Great Eastern Energy Corporation Ltd. (GEECL)**
Completed 06 CNG Stations at West Bengal. Scope included Concept design, Detail design, Approval drawings, Periodic Site evaluation etc. and Retail Visual Identity (RVI)



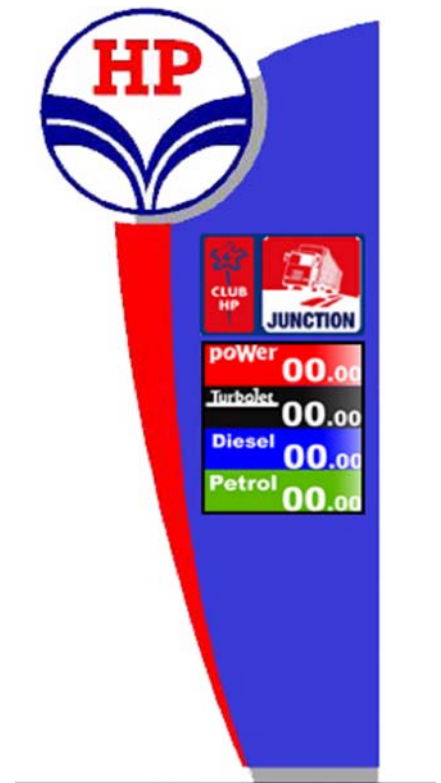
CNG FILLING STATION FOR GEECL

PROJECTS OF CNG STATIONS & PETROL PUMPS:

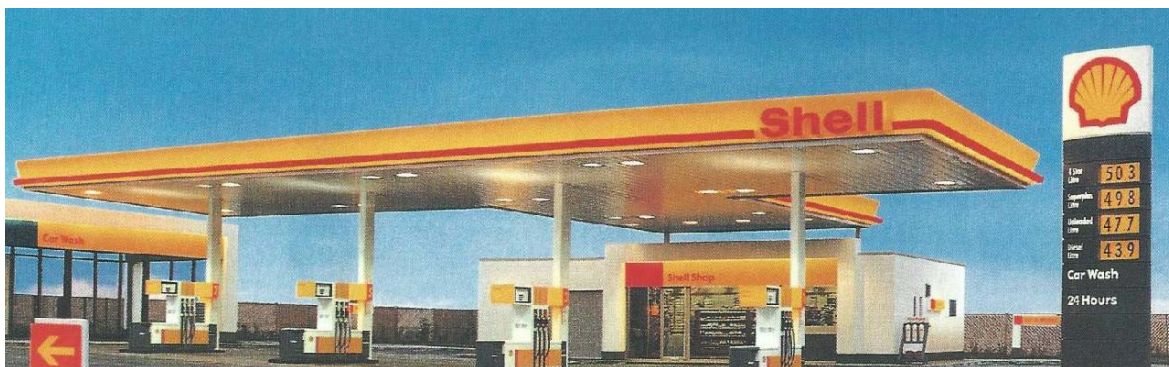
- **PETROL FILLING STATIONS for Indian Oil Corporation Limited (IOCL)**
Designed 200 Fuel retail outlets to come in Urban, Highway and Rural Markets all over the country.
Detail design for different formats of retail outlets.
Retail Visual Identity (RVI) for Retail Outlets.



- **PETROL FILLING STATIONS for Hindustan Petroleum Corporation Limited (HPCL)**
Designed 16 Nos. Fuel retail outlets to come in Urban, Highway and Rural Markets all over the country.
Detail Design for different formats of retail outlets on different plot sizes.
Retail Visual Identity (RVI) for Retail Outlets covering all aspects including dress design for retail outlet staff.
Compiling information for the preparation for manual for the construction of retail outlet.



- **PETROL PUMPS FOR SHELL AT DELHI**
Construction Cost. – 2 Crore (Combined for 2 stations).



INTERIOR PROJECTS:



SHOWROOM FOR SANYA MOTORS AT DEFENCE COLONY, NEW DELHI

INTERIOR PROJECTS:

OFFICE OF SOFTEDGE PVT. LTD.

An IT Company in Defense Colony, Delhi

OFFICE FOR AMTEK AUTO

SAKET, NEW DELHI – 1991.

Construction Cost – 25 Lacs.

RESIDENCE OF MR. DHAM

SAKET 1991

Construction Cost – 20 Lacs.

RESIDENCE OF MR. CHABBRA

PANCHSHEEL PARK, 1990

Construction Cost – 15 Lacs.

OFFICE FOR PESCO

G.K. II, NEW DELHI – 1994

Construction Cost – 28 Lacs.

OFFICE FOR MICRO AZURE SYSTEMS

UDYOG VIHAR, NEW DELHI – 1994

Construction Cost – 20 Lacs.

FIESTA – THE CAKE SHOP

VASANT PLACE, NEW DELHI – 1995

Construction Cost – 16 Lacs.



SHOWROOM FOR 'SILK FOREST' AT SANTUSHTI, NEW DELHI, CALCUTTA



'METRO' RESTAURANT, NEW DELHI

INTERIOR PROJECTS:

OFFICE FOR SEPTECH FOODS P. LTD.
OKHLA INDUSTRIAL AREA – 1990
Construction Cost – 75 Lacs.

OFFICE FOR SEPTECH FOODS P. LTD.
AT GWALIOR, M.P. – 1990
Construction Cost. – 17 Lacs.

TOWN HOUSE FOR MR. MITRA
U-28/4, DLF, QUTAB ENCLAVE – III
Construction Cost – 10 Lacs, 1996

ROOP INTERNATIONAL OFFICE AT
VASANT VIHAR, NEW DELHI
Construction Cost – 25 Lacs.

GUEST HOUSE, FOR DLF LTD.
GOL MARKET, NEW DELHI – 1991
Construction Cost – 50 Lacs.

SHOWROOM FOR “SILK FOREST”
AT SANTUSHTI, NEW DELHI &
CALCUTTA.
Construction Cost – 14 Lacs. each.

OFFICE FOR COAL. PH I, II & III
NEW DELHI, 1996, 97, 99
Construction Cost. – 35 Lacs.

SHOWROOM FOR OPTIQUE
VASANT VIHAR, NEW DELHI, 1996.
Construction Cost. – 15 Lacs.

OFFICE FOR ANAGRAM LIMITED
ANSAL TOWERS, NEW DELHI - 2000
Construction Cost. – 10 Lacs.

SHOWROOM FOR DAEWOO MOTORS
DEFENCE COLONY, NEW DELHI – 2000
Construction Cost. – 60 Lacs

**AFFRO: OFFICE BUILDING &
INTERIORS: (2007)**
Designing, detailing and execution of floors
of the building at Janakpuri, New Delhi.

OFFICE FOR CREATIVE MEDIA
KOTLA, NEW DELHI – 1996.
Construction Cost. – 50 Lacs.



INTERIOR FOR ROOP INTERNATIONAL OFFICE, NEW DELHI

OTHER PROJECTS:

- **KALAGRAM FOR DELHI TOURISM: (SANCTIONS AWAITED)**
Designing and detailing Kalagram for Delhi Tourism at Said-ul-Ajaib, New Delhi.



KALAGRAM SITE PLAN

- **SOFT ADVENTURE PARKS FOR DELHI TOURISM: (SANCTIONS AWAITED)**
Designing and detailing soft adventure parks for Delhi Tourism at Sanjay Lake and Azad Hind Gram.



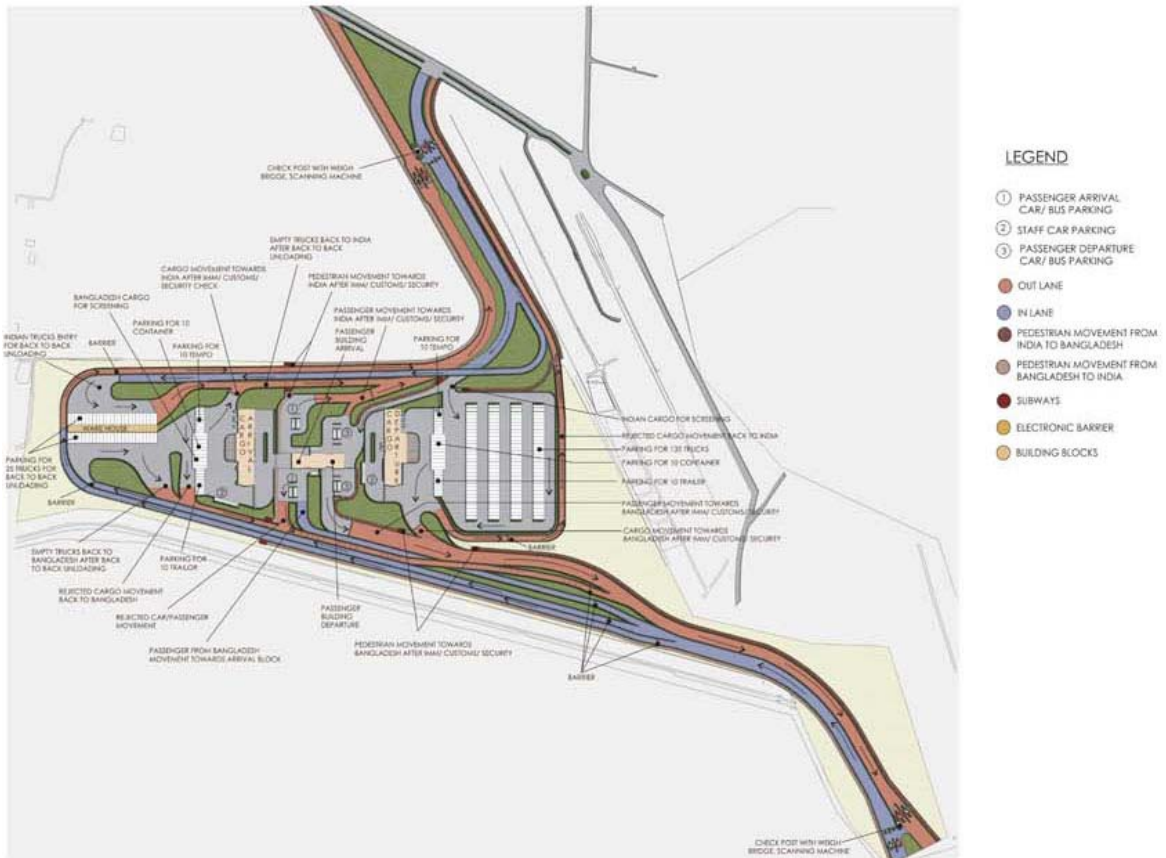
ADVENTURE PARK AT SANJAY LAKE



ADVENTURE PARK AT AZAD HIND GRAM

OTHER PROJECTS:

- **INTERNATIONAL CHECK POSTS ON THE INDO-BANGLADESH BORDER:**
Designing and detailing International Check posts based on IATA standards

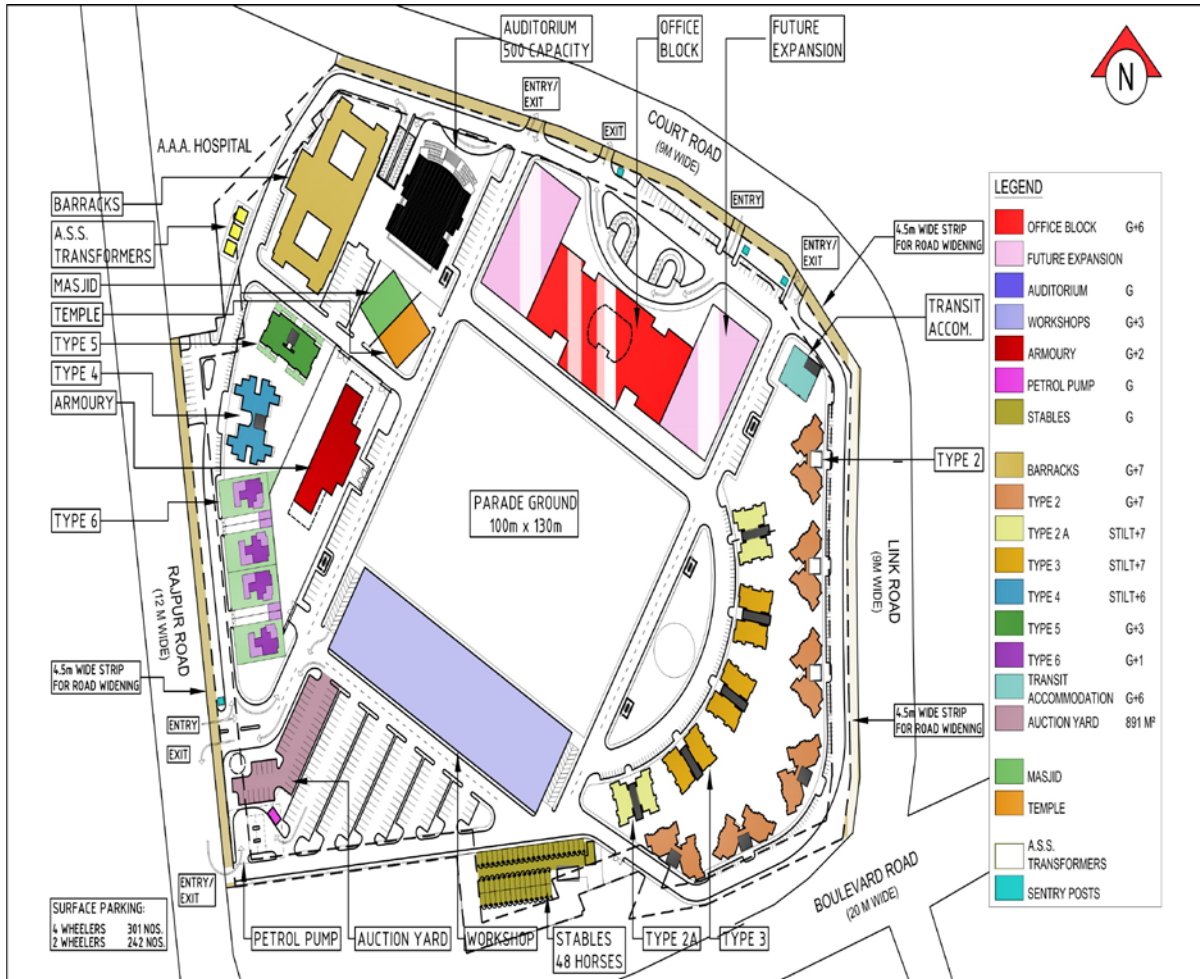


INTERNATIONAL CHECK POST ON THE INDO-BANGLADESH BORDER

OTHER PROJECTS:

- REDEVELOPMENT OF OLD POLICE LINE COMPLEX AT RAJPUR ROAD, NEW DELHI (DESIGN IN PROGRESS):**

Project involves removal of all existing structures to make space for a new campus at the existing 21 acres site. Program envisages offices, museum, residences, and barracks apart from shooting range, sports and entertainment facilities.



OLD POLICE LINE COMPLEX

OTHER PROJECTS:

URBAN DESIGN

- **NEW TEHRI TOWNSHIP, BAURARI**

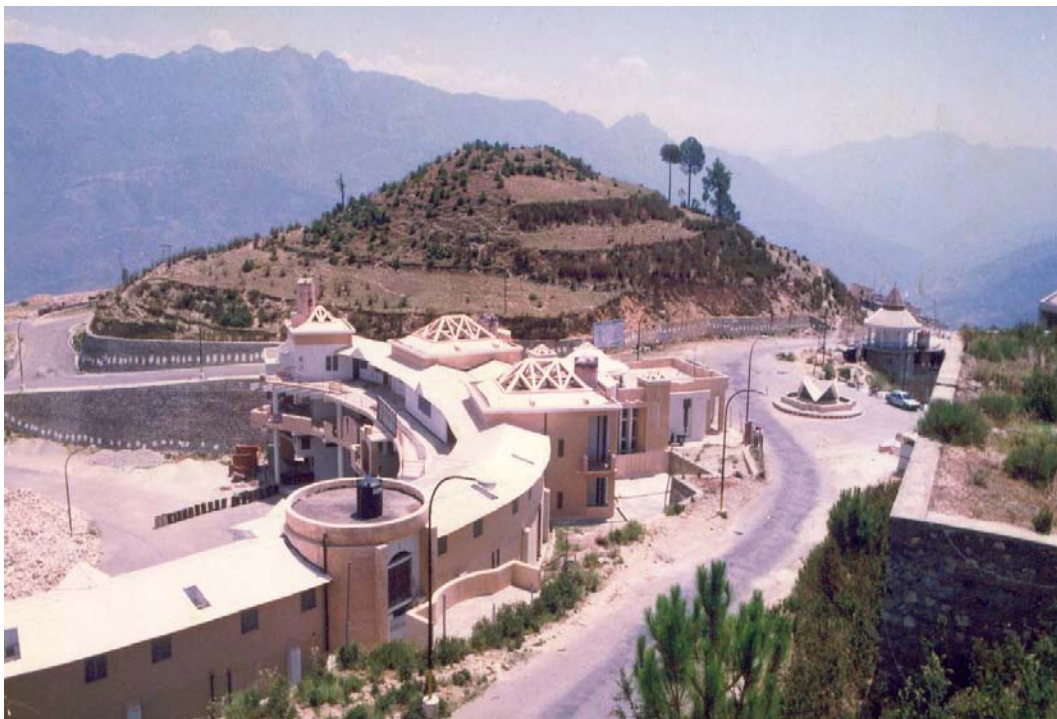
A part of the new Tehri township in Gahrwal comprising of the interstate bus terminus, shopping, commercial & industrial zones hotel sites, commercial blocks, Yatri Nivas, restaurants & parks the job includes architecture, interiors & landscape design for all the buildings in that area – 1992, Construction Cost – 9 Crores.

- **BAURARI FOUNTAIN, N.T.T.**

The project includes shopping and development at the major city square – 1996-1997.
Construction Cost. – 3 Crore.

- **BUS STANDS & STREET / TRAFFIC FURNITURE FOR SHELL INDIA**

Designed and developed under community awareness program in Delhi & Bombay. Program extended to Chennai, Bangalore, and Hyderabad.



INTERSTATE BUS TERMINUS AT NEW TEHRI TOWN, BAURARI

OTHER PROJECTS:



INTERSTATE BUS TERMINUS AT NEW TEHRI TOWN, BAURARI

INDUSTRIAL PROJECTS:

**TANNERY FOR AERO AT JAMBUL,
KAZAKHISTAN. 1989.**

Construction Cost – 77 Million Roubles.

**SHOE FACTORY TO PRODUCE REEBOK
AT SONEPATH 1996.**

Construction Cost – 500 Lacs.

SHOE FACTORY

FOR MOJA SHOES AT SONEPATH. 1997.

Construction Cost – 700 Lacs.

**SHOE UPPER FACTORY AT NOIDA PH II
FOR WOODLAND SHOES. 1996.**

Construction Cost – 150 Lacs.

SEPTECH FOOD PVT. LTD.

FOOD PROCESSING PLANT

AT GWALIOR, M.P. – 1989.

Construction Cost – 45 Lacs.

**PESHWAR SOAPS & CHEMICALS,
AUTOMATIC SOAP MANUFACTURING
AND PACKAGING PLANT AT**

GURGAON – 1994

Construction Cost – 2 Crore.

BIOTECH INTERNATIONAL LTD.

TRICHOGRAMMA MASS PRODUCTION
PLANT.

GURGAON 1994-95

Construction Cost – 1 Crore.

SEPTECH FOOD PVT. LTD.

FOOD PROCESSING PLANT

AT GURGAON

Construction Cost – 35 Lacs.

**OIL EXTRATION PLANT FOR DARSHAN OIL
MILLS, ALIGARH. 1989.**

Construction Cost – 250 Lacs.

**OIL REFINARY FOR DARSHAN OIL
MILLS, ALIGARH. 1991**

Construction Cost – 330 Lacs.

**VANASPATI PLANT FOR DARSHAN OIL
MILLS, ALIGARH. 1993.**

Construction Cost – 220 Lacs.

**TUPPERWARE FACTORY AND OFFICE
BLOCK, AT GURGAON. 1999.**

Construction Cost – 220 Lacs.

**SONG RIVER PACKAGING FACTORY AT
PAVTA SAHAB, DEHRADUN 1992**

Construction Cost – 120 Lacs.

MINI-CEMENT PLANT

FOR GANGA CEMENT, JODHPUR 1984

Construction Cost – 75 Lacs.

SANDOZ INDIA PVT. LTD.

WAREHOUSE, UDYOG NAGAR 1994

Construction Cost – 50 Lacs.

SEPTECH FOOD PVT. LTD.

FOOD PROCESSING PLANT FOR SAML

PACK AT PACE CITY, GURGAON – 1997

Construction Cost – 50 Lacs.

PS PRESS SERVICES PVT. LTD.

PRINTING PRESS AT NOIDA – 1999

Construction Cost – 140 Lacs.